

Reading Notes in Bass Clef

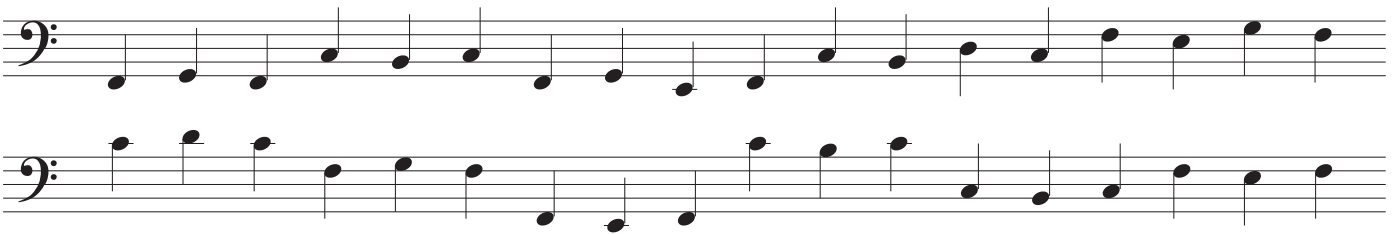
(with the Level Up method)

This worksheet will give us an opportunity to practice our bass clef note reading using pen and paper. Write the letter name under each note on the staff. Remember that our “Level Up” packet offers much more material for practicing out loud - keep doing it until it becomes fast and easy!

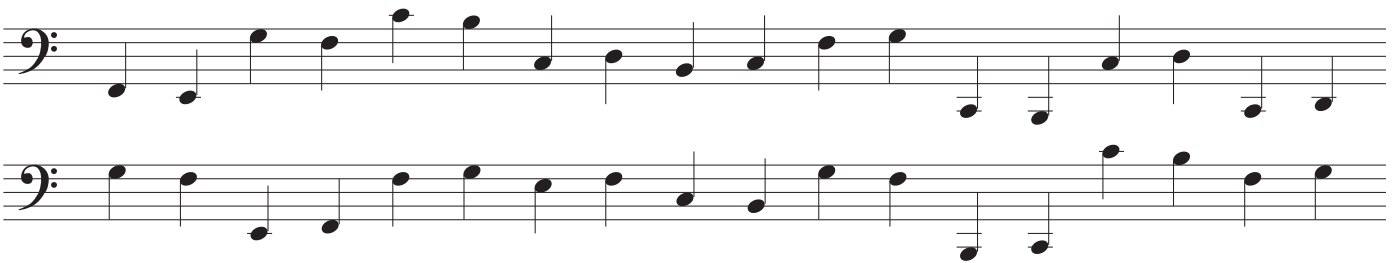
LEVEL ONE - F's and C's



LEVEL TWO - Neighbor figures around F and C



LEVEL THREE - Incomplete neighbors, plus new low C



LEVEL FOUR - Only the neighbor notes

