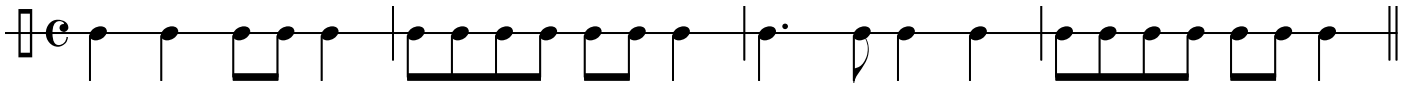


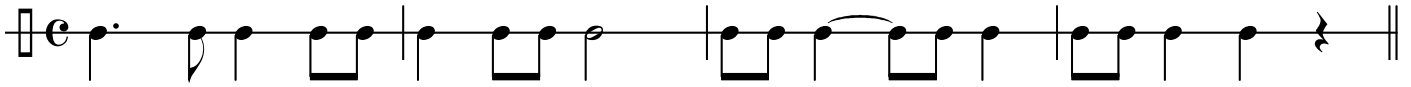




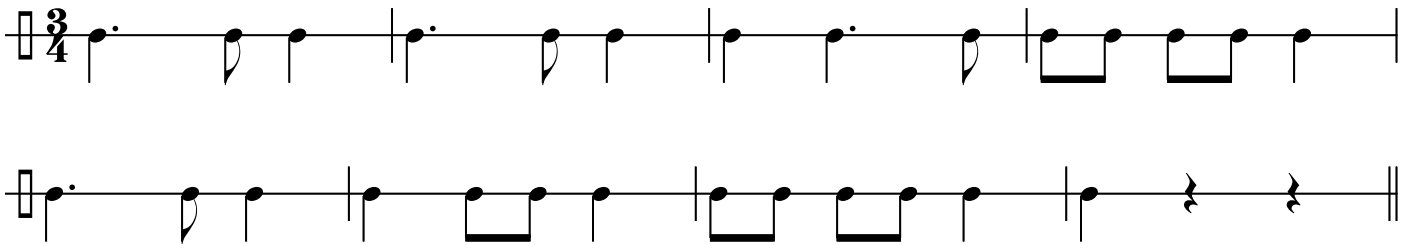
13.



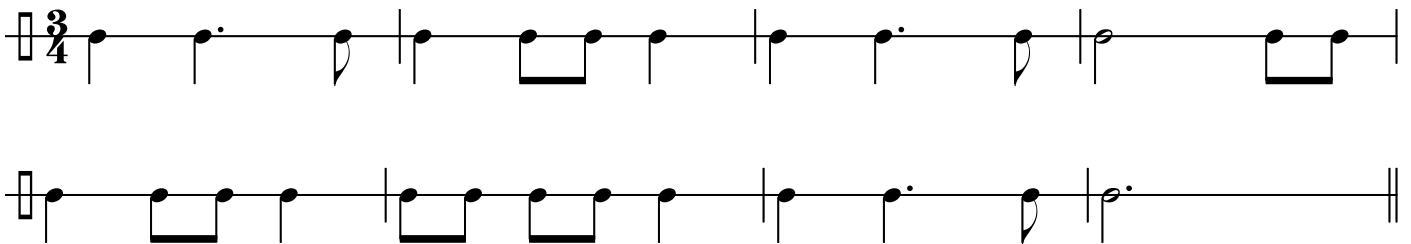
14.



15.

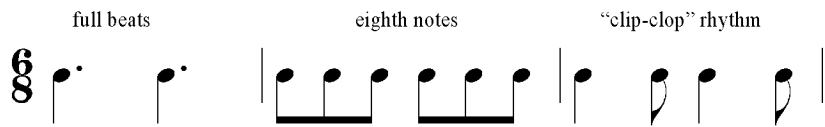


16.



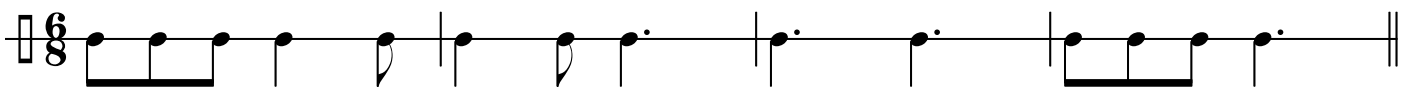
B. 6/8 and 9/8

Remember that these 6/8 rhythms are built of a few basic units:

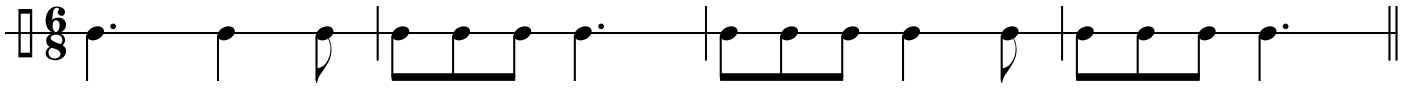


If you can do these, you can do any of the following passages!

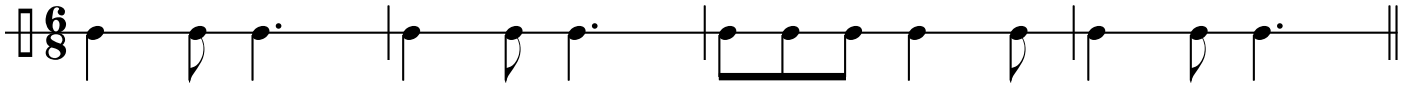
17.



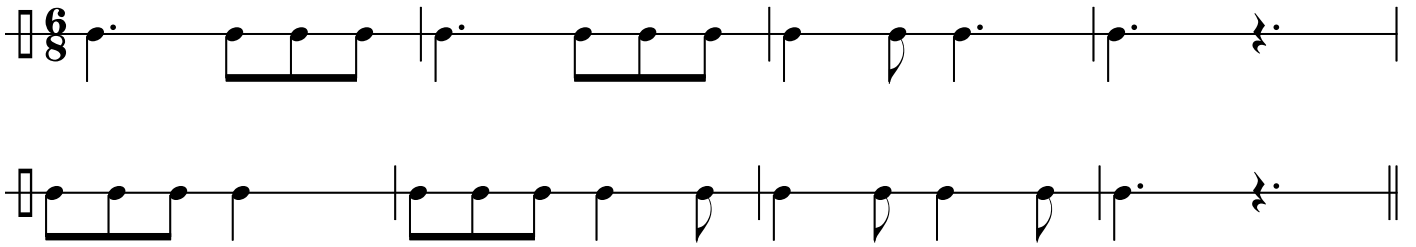
18.



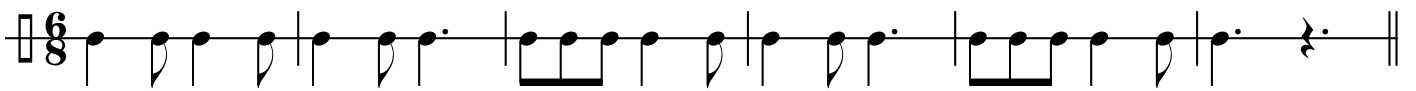
19.



20.



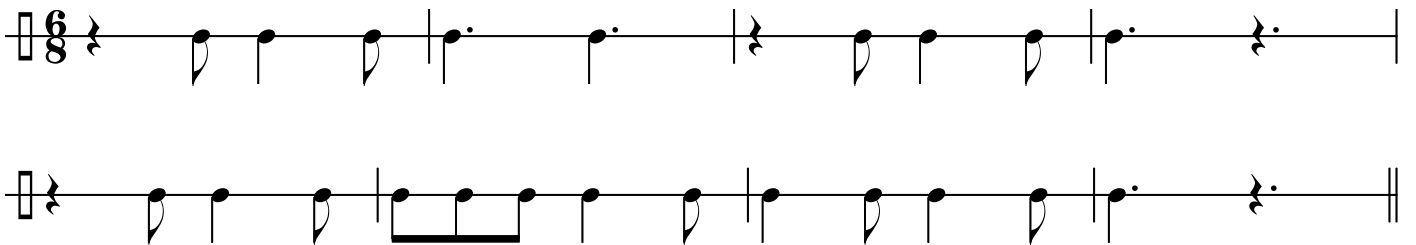
21.



22.



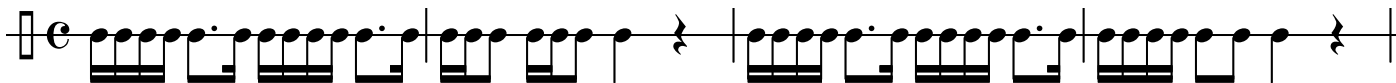
23.







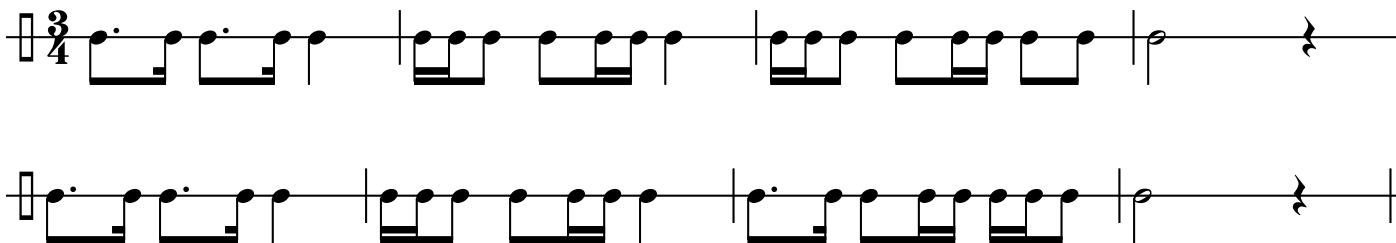
37.



38.

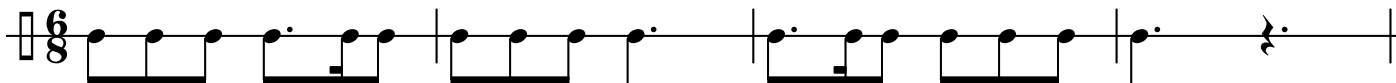


39.

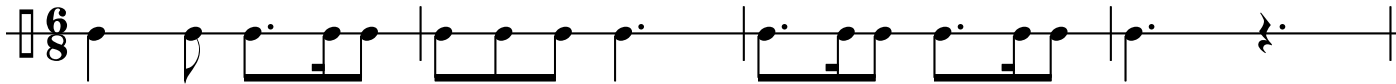


D. Return to 6/8 - adding a very graceful dotted figure

40.



41.



(adding yet another rhythmic cell with sixteenth notes)

42.

