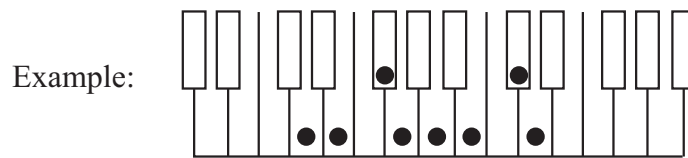


Creating Major Scales

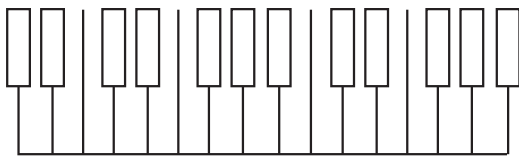
Part I: Using a piano keyboard

Draw dots on these piano keyboards to show where the notes in the scale would fall.



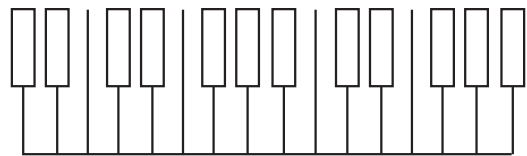
D major

1)



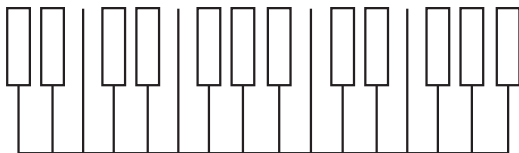
B-flat major

2)



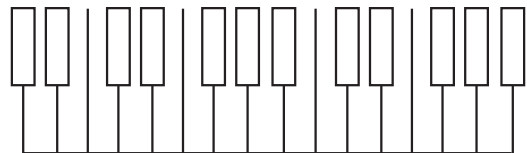
G major

3)



E major

4)



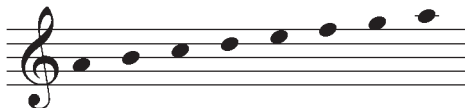
A-flat major

Part II: Using the staff, treble and bass clefs

Add accidentals to these notes so that they spell the requested scale.

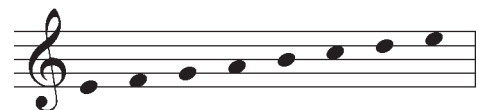
(Remember that accidentals go *before* the notes on the staff, not after.)

1)



A major

2)



E-flat major

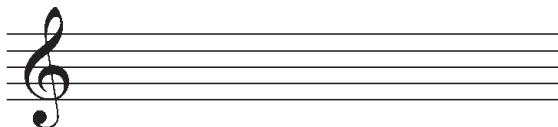
3)



B major

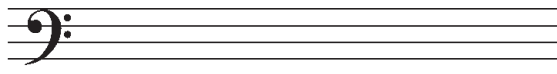
Now create the requested scale in these empty staves.

5)



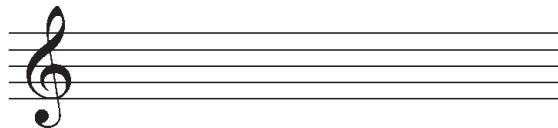
D major

6)



G major

7)



F major

8)



E-flat major
(start *below* the staff)

Part III: Spelling scales with letter names

Spell out the requested scales with letter names.

Example: B \flat major

B \flat C D E \flat F G A B \flat

1) A-flat major

2) D major

3) E major

4) D-flat major