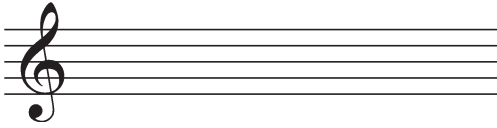


Making Scales: Major and Minor

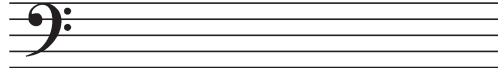
Draw the scale on the staves provided. Put accidentals next to each note (as opposed to using a key signature.)

1.



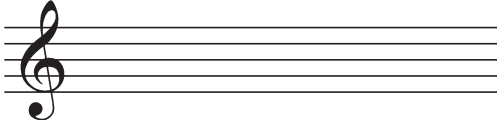
D minor

2.



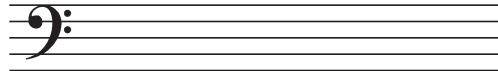
A \flat major

3.



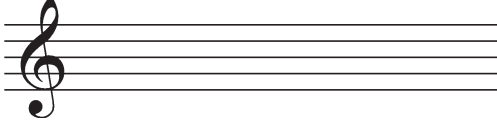
A major

4.



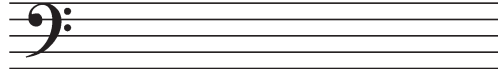
F \sharp minor

5.



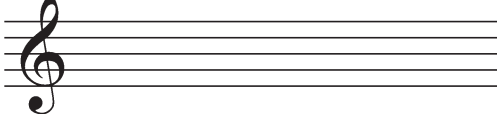
C minor

6.



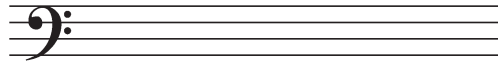
E major

7.



B \flat minor

8.



B major

ID these key signatures, both with the major key and relative minor:

9.



___ major

___ minor

10.



___ major

___ minor

11.



___ major

___ minor

12.



___ major

___ minor