

Quiz #2 is Friday, Nov 15

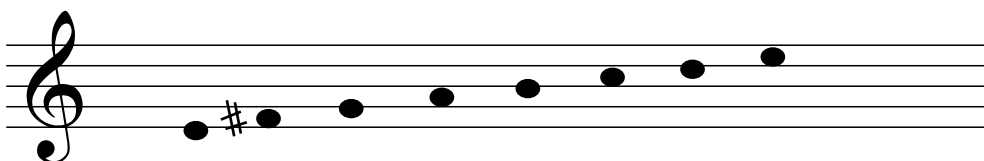
Our next theory quiz will happen in one week. Once again we'll budget the entire session to do it. Here are all of the topics I have planned.

Part A - Draw some minor scales on the staff

In general we are going to focus on minor scales from the top half of the circle, from three flats to three sharps. In this part I'll ask you to "put any accidentals directly on the notes," though you can still include a redundant key signature if you want.

Sample answer:

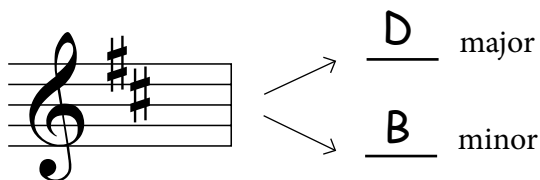
E minor



Total of three scales. One will be in bass clef. One will ask for the "harmonic" minor scale.

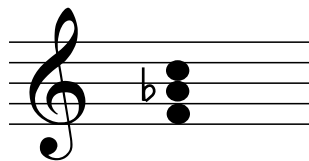
Part B - Major and minor key sigs

Here I'll show you a key signature and you will tell me what major AND minor key it represents. Three of these. Again the sigs will be limited to the top of the circle, from three flats to three sharps.



Part C - Make Triads

Draw a bunch of triads on the staff. I think there will be six of these. Prompts will ask for major, minor and diminished triads, and you'll work on both treble and bass clefs.



F minor

Because there are only 12 items on the whole quiz, every one will be worth a fairly large number of points. Accuracy is crucial, so I recommend that you practice with a webpage (like [tonesavvy.com](https://www.tonesavvy.com)) or app (like Tenuto).