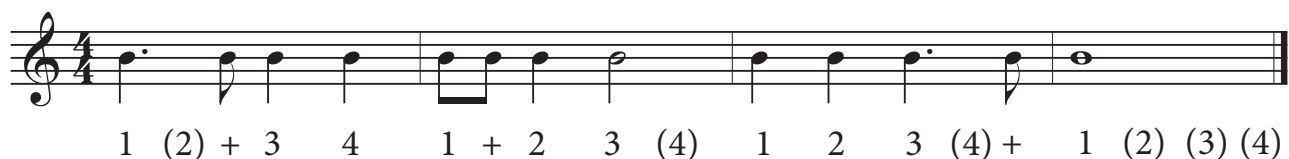


Music 220 Theory Test #1 Study Guide

Our first theory quiz is happening on **Wednesday, Feb 11**. It'll have 22 questions, each worth 4 points, and we'll go nice and slow, budgeting the full 50 minutes to do it. If for any reason you cannot make it at the scheduled time make sure you email me ASAP.

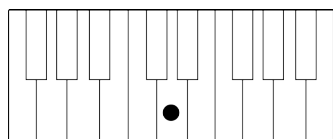
Part A - Add a count to some rhythms

3 of these, including one with a dotted "heartbeat" rhythm and maybe one with a tie in it. Consult homeworks #2 and #5 for examples that we already did, and here is one more with solution.



B. Notes on the piano

Pictures of notes on the piano, and you say what it is. There are 6 of these. :)



C. Whole steps and half steps

Here I demand to know what notes are a certain distance away from other notes. 4 of these.

Which note is a half step down from E flat? _____

D. Scales

Making your scales (major only!) First you have to spell out two of them using letter names.

Example: B major B C# D# E F# G# A# B

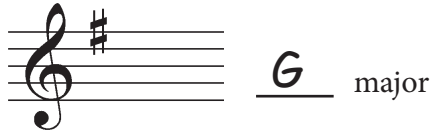
Then you make two of them on the staff (with treble clef).

Example: D-flat major



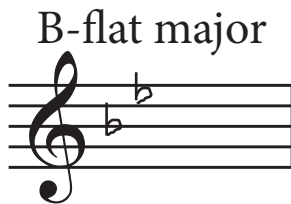
E. Recognizing key signatures

Look at two key signatures and say what they are (major keys only).



F. Making key signatures

Finally I ask for two key signatures, and you'll be expected to draw them in the proper pattern of sharps or flats. I try to explain the proper way to make your sigs on p. 33 in the theory text. (Also, make sure you get the sharp or flat exactly on the line or space where it belongs.)



For Part F (drawing a sig) I'll use the "easy" part of the circle, from 3 flats to 3 sharps. For the parts D & E (spelling scales and recognizing sigs) I will sometimes go all the way to 5 flats or sharps.

That's it!

No minor scales, no bass clef. This first quiz is fairly pleasant, but for best results (like a 100) some studying with [tonesavvy.com](https://www.tonesavvy.com), the tenuto app, old homeworks, etc. might help.

Extra Time and Other Accommodations

If you are signed up for extra time on tests I am of course willing to accommodate that. Just let me know.

I would say, however, that this first test is very short, and the 50 minutes we've budgeted will definitely be enough time. Most students complete it in 20 minutes or less.