

Quiz #1 Preview

Our first theory quiz is happening on **Friday, Feb 9**. It'll have 22 questions, each worth 4 points, and we'll go nice and slow, budgeting about 40 minutes to do it. If for any reason you cannot make it at the scheduled time make sure you email me ASAP.

Part A - Add a count to some rhythms

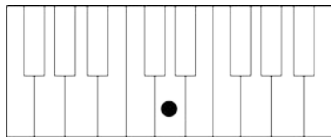
3 of these, including one with a dotted "heartbeat" rhythm and one with ties. Consult homework #6 for examples that we already did, and here is one more with solution.



1 (2) + 3 4 1 + 2 3 (4) 1 2 3 (4) + 1 (2) (3) (4)

B. Notes on the piano

Pictures of notes on the piano, and you say what it is. There are 6 of these. :)



C. Whole steps and half steps

Here I demand to know what notes are a certain distance away from other notes. 4 of these.

Which note is a half step down from E flat? _____

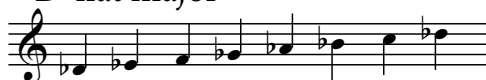
D. Scales

Making your scales (major only!) First you have to spell out two of them using letter names.

Example: B major B C# D# E F# G# A# B

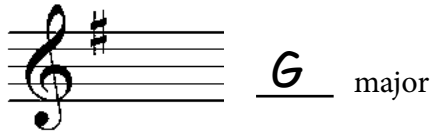
Then you make two of them on the staff (with treble clef).

Example: D-flat major



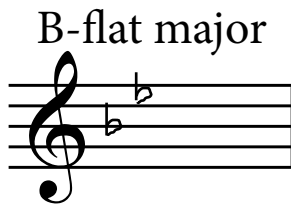
E. Recognizing key signatures

Look at two key signatures and say what they are (major keys only).



F. Making key signatures

Finally I ask for two key signatures, and you'll be expected to draw them in the proper pattern of sharps or flats. I try to explain the proper way to make your sigs on p. 33 in the theory anthology. (also, make sure you get the sharp or flat exactly on the line or space where it belongs.)



For Part F (drawing a sig) I'll use the "easy" part of the circle, from 3 flats to 3 sharps. For the parts D & E (spelling scales and recognizing sigs) I will sometimes go all the way to 5 flats or sharps.

That's it!

No minor scales. This first quiz is fairly pleasant, but for best results (like a 100) some studying with tonesavvy.com, the tenuto app, old homeworks, etc. might help.

Extra Time and Other Accommodations

If you are signed up for extra time on tests I am of course willing to accommodate that. What we would do is work for our scheduled 40 minutes and you would submit your test along with the class. If you feel that you need more time than that we could make an appointment to revisit the test again soon outside of class.

However, I think it is unlikely that you are going to want it. :) The test can be finished in 15 minutes and 40 is usually more time than we need.

If you are signed up to take your tests in private and would like that accommodation, please let me know ahead of time so we can schedule it.