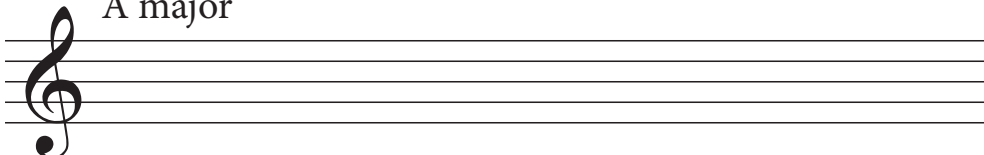


## More major scales plus key signatures

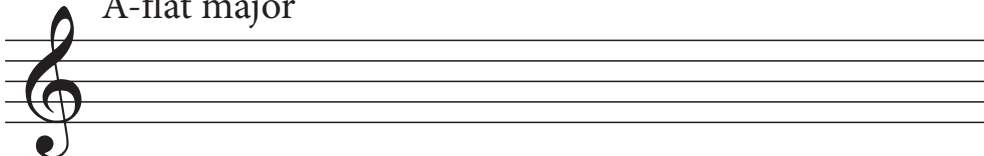
### A. More Major Scales

Let's build these scales on some staves with treble clefs. Apply the sharps or flats directly to each note, rather than using a key signature.

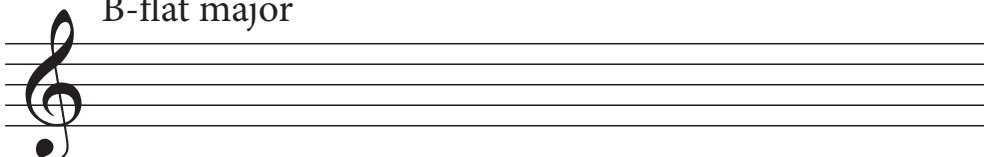
1) A major

A musical staff with a treble clef, consisting of five horizontal lines. The staff is empty, intended for writing the A major scale.

2) A-flat major

A musical staff with a treble clef, consisting of five horizontal lines. The staff is empty, intended for writing the A-flat major scale.

3) B-flat major

A musical staff with a treble clef, consisting of five horizontal lines. The staff is empty, intended for writing the B-flat major scale.

### B. Making Key Signatures

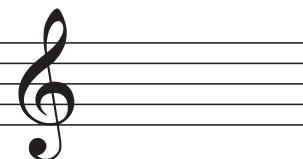
Chapter 9 in our theory anthology covers everything you need to know about key sigs. Honestly you could copy most of the answers for this part directly from the text! However, I recommend you do some kind of memory game with it anyway (like write your answer, then doublecheck.)

Pay particular attention to p. 33, which explains how you are supposed to draw key signatures.

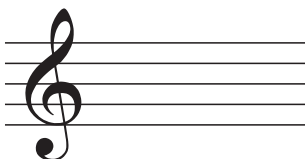
4) D major

A musical staff with a treble clef, consisting of five horizontal lines. The staff is empty, intended for writing the D major scale.

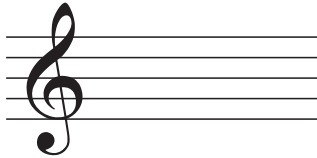
5) A-flat major

A musical staff with a treble clef, consisting of five horizontal lines. The staff is empty, intended for writing the A-flat major scale.

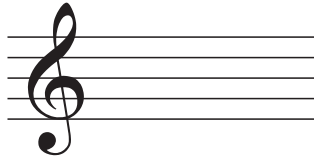
6) F major

A musical staff with a treble clef, consisting of five horizontal lines. The staff is empty, intended for writing the F major scale.

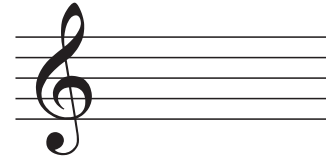
7) G-flat major



8) B major



9) G major



C. ID these major keys by the number of flats or sharps.

10) Which major key has 2 flats? \_\_\_\_\_

11) Which major key has 4 flats? \_\_\_\_\_

12) Which major key has 3 sharps? \_\_\_\_\_

13) Which major key has 7 sharps? \_\_\_\_\_

14) How many sharps does D major have? \_\_\_\_\_

15) How many flats does E-flat major have? \_\_\_\_\_

16) How many sharps does B major have? \_\_\_\_\_

17) How many flats does F major have? \_\_\_\_\_