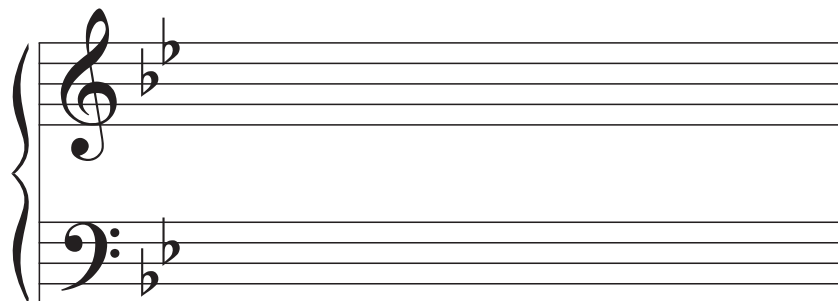


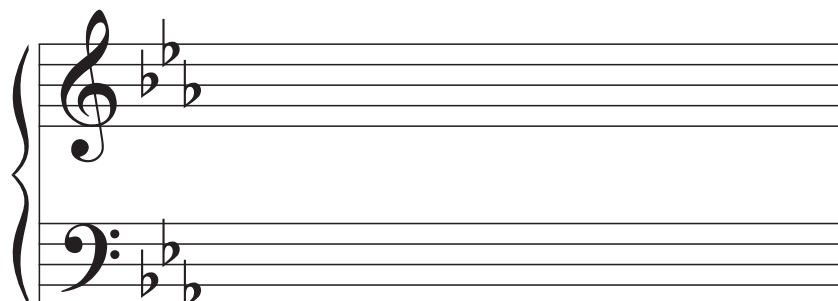
Progs with third motions

Consult our Theory Anthology Ch 20 (pp. 75-78) for details on how to make these progressions where the bass sometimes moves by third or sixth. Of course the procedures we learned in Chs 18 + 19 are still relevant for making all of the other connections.

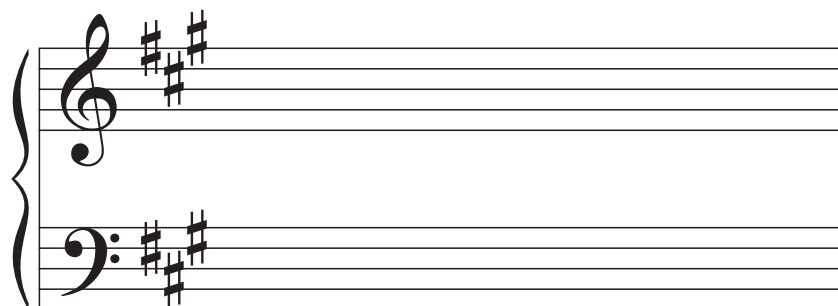
Key signatures are included, but be sure to add any extra accidentals you may need for the one in minor.



B \flat : I vi IV V I



c: III VI iv V i



A: I IV ii V I

(one more on the back)



Make your own progression

- choose a key other than C major
- five or six chords
- follow the flowcharts from our Theory Anthology Ch. 20.
(you can start on tonic, jump out to a “remote” harmony and work your way back, or just start on the remote chord)
- label your chords with roman numerals

