

Transposing Some Melodies

Let's practice reading some melodies in different keys. I'll take two tunes from our anthology and move them to a new scale with a new key signature. Your job will be name all the notes (taking the key signature into account when necessary) and also to describe the melody with the solfege syllables (like *do re mi*). If you are fuzzy on any of this the solfege syllables are covered on pp. 12-13 and key signatures are mentioned on p. 22 and 28.

A. Melody #8

Here is #8 in C major, like it is in the textbook. Put the note names (like "C" etc) under the music and please jot the corresponding solfege syllables above it.

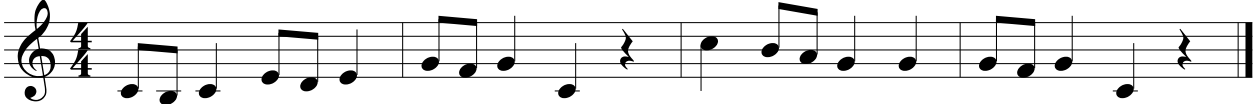


Let's move this one to G major. Again, we'll put the note names under the music. There is a key signature here that turns all F's into F#'s - take that into account as you name your notes. You can jot the solfege syllables above the music if you want but they are going to be exactly the same as the C major ones (because we "move" the syllables as we change key.) I'd say you don't have to write out the same thing again. ☺



B. Rejected Melody!

It looks like this is an earlier version of melody #9. Let's start with the C major version. Once again please write the note names underneath AND the solfège syllables up top.



Let's move it down to B♭ major. Write the note names underneath the music.



Finally let's move it up to A major. Write in the note names one last time.

