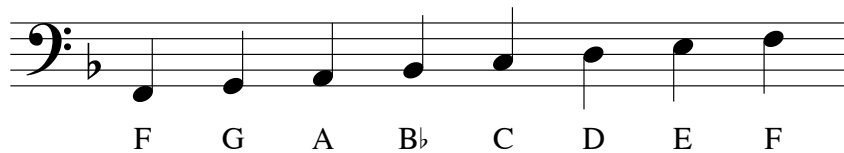


Bass Cleffy Scales and Tune Transposition

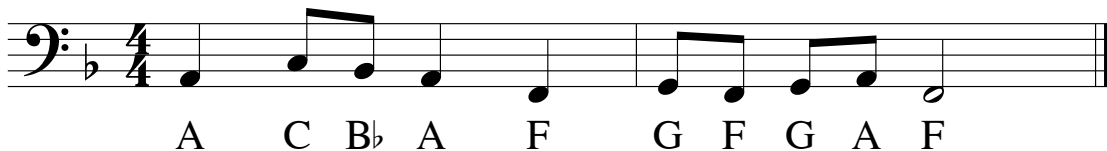
A. Example Scale + The Tune

OK, let's focus on a few things we've been doing lately. We'll do a bunch of bass clef (see p. 4 in the textbook for reference). We'll make some scales with their key signatures (pp. 29-35), AND we'll transpose a tune to these keys.

First, let me do an example scale in F major. I'll start by putting in my key sig (one flat). I won't include that flat when I write my notes, because the signature takes care of that! I'll label all of my notes down below with letters, indicating the flat when I get to it.



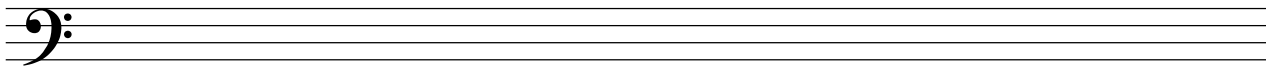
Now let's introduce our tune of the day. I'll write it in F major, in bass clef. I'll start with a sig and label all the notes. Notice how it starts on the third scale degree, what we'd call "mi" when singing in solfège.



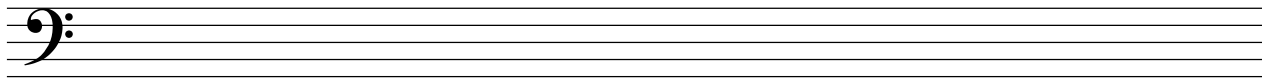
B. Moving everything to Bb major

Please recreate everything I did in Part A, moving it to a new key.

First let's make a Bb major scale, starting with the key signature. Label your notes underneath.

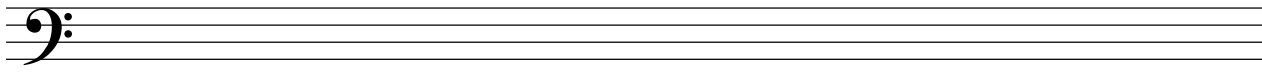


Now please write our tune in B \flat major, complete with key signature and 4/4 time sig. Label your notes.

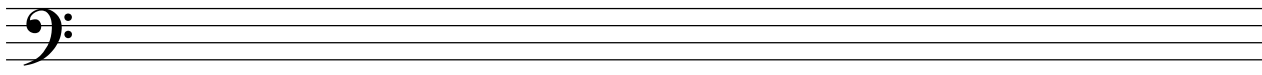


C. Moving everything to D major

scale

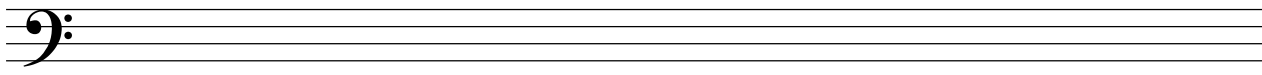


tune



D. Moving everything to G major

scale



tune

