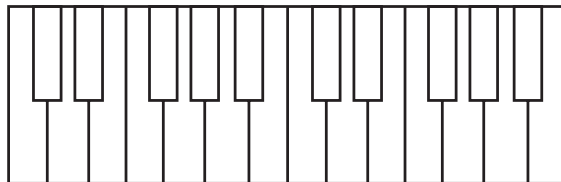


More Scales + Key Sigs

Once again you can review our Theory Anthology chapters 8 and 9 before you start.

A. Putting scales on the staff

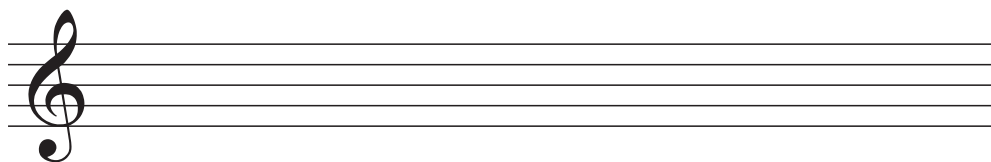
Let's draw some scales on the staff with treble clef. In case you still need a piano to figure this out, I'll put one up here for reference.



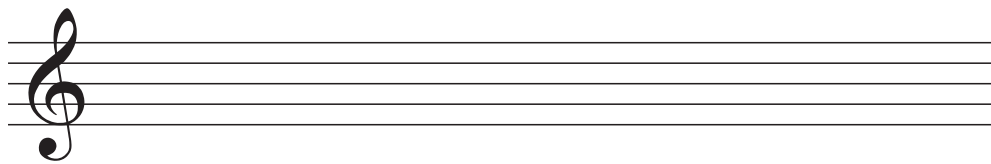
Remember that your sharps and flats go *before* the notes when you are writing on the staff. Here is an example of what your final result should look like.



1) Please notate **E-flat major**.



2) Please notate **E major**.



B. Key sigs quiz

These key signatures are all taken from the “easy” part of the circle of fifths, from three flats to three sharps. You can use the circle on p. 34 for reference, or maybe google it. Try to put your reference aside and answer these questions from memory, though.

