

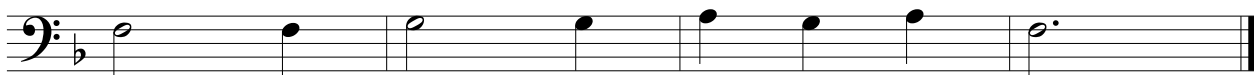
Transposed Melodies II

Let's do another round of transposed melodies, like we did for Homework #4. This time we'll add a few twists. All of these will be in **bass clef** (see p. 4 in our textbook if you need a reference.) They'll start in a key other than C major, and you'll have to use your knowledge of **key signatures** to figure out what the key is! (See p. 34 for a key sig reference.)

Part A

- 1) Figure out what key this is by looking at the key sig. Indicate the key in the blank above it.
- 2) Give the note names under the music (like C, D, E etc.) Follow the key sig - if the signature has a B \flat make sure you indicate the flat each time.
- 3) Jot the solfege syllables above the music (like do re mi etc.)

Key is _____



Part B

- 1) Figure out what key this is by looking at the key sig. Indicate the key in the blank above it.
- 2) Give the note names under the music (like C, D, E etc.) Follow the sharps in the key sig.
- 3) Optionally you can jot the solfege syllables above the music (like do re mi etc.) - it should be the same as Part A.

Key is _____

