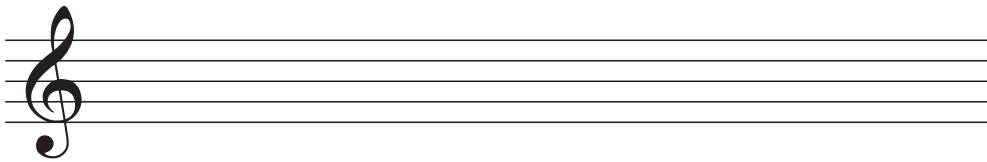


## Scales and Key Sigs II

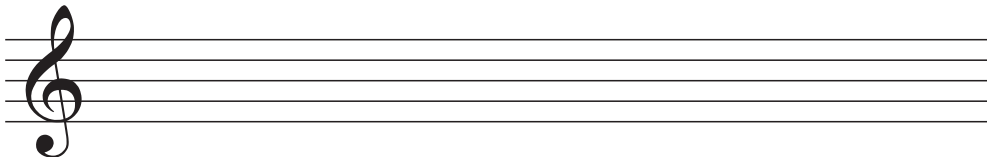
### A. Scales on the staff

Let's draw three more major scales on the staff, including one in bass clef.

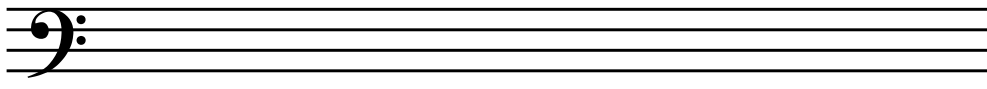
1) Please notate **D major**.



2) Please notate **A $\flat$  Major**



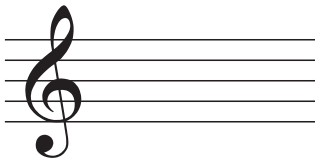
3) Please notate **B $\flat$  Major** (on bass clef!)



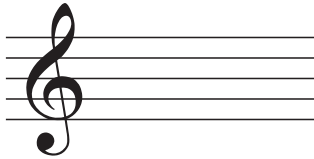
## B. Fill in your own circle

Make the key signature for each scale, organized into the top part of the circle of fifths. C major requires no additional markings, of course. Try to draw them like they are presented in pp. 28-34 of our theory textbook - each key signature is supposed to present the sharps or flats in a certain order.

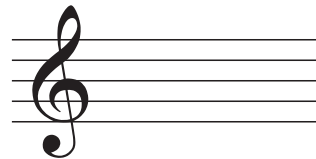
F major



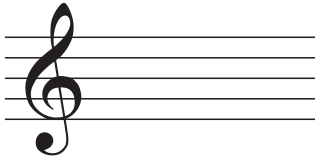
C major



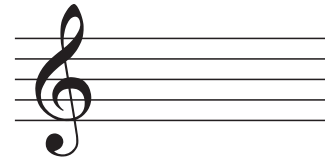
G major



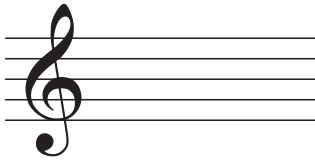
B $\flat$  major



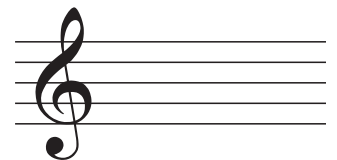
D major



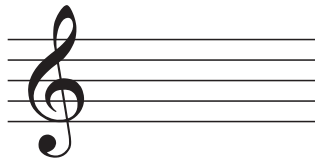
E $\flat$  major



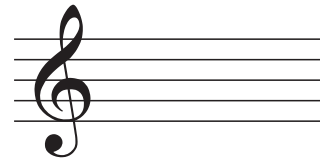
A major



A $\flat$  major



E major



D $\flat$  major



B major

