

Theory Test #3 will be Wednesday, April 22

A. Intervals

We'll make and recognize a few intervals of different sizes (including both "small" and "large" ones.) This is like Worksheets #10 and #12.

(make)



↑ P4

(ID)



m7

B. Make Triads in Inversion

Make a few triads in first or second inversion, like on Homework #13.




A \flat major
in 2nd inversion

ANSWER




C. Recognize Triads in Inversion

Recognize some triads that are either in root, 1st or 2nd inversion, like on Homework #13.



in _____

ANSWER



e diminished

in 1st inversion

D. Roman Numerals in Major

Make some triads in a few keys. Like Homework #11



D: IV

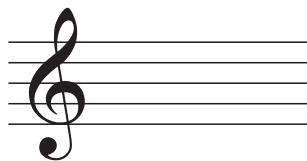
ANSWER



Parts E and F on back...

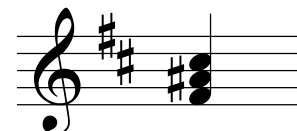
E. Roman Numerals in Minor

These require you to start with a key signature, and you may have to add an additional natural or sharp to make the raised leading-tone (for V or vii°). Like Homework #11.



b: V

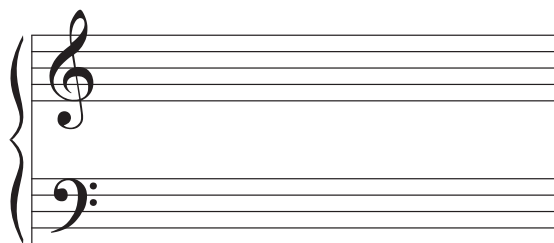
ANSWER



b: V

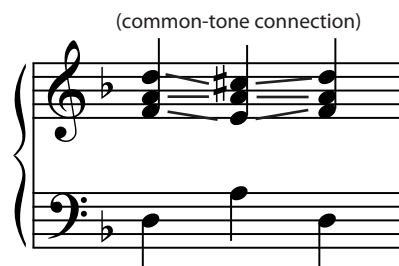
F. Two I-V-I Progressions (probably with common-tone technique)

Finally we'll sneak in two I-V-I progressions, which we are just learning about right now (and we'll try on Worksheet #14). You will probably want to use the common-tone technique, though I will accept any "legal" progression that obeys the conventions of proper counterpoint. This will include one in a minor key, which will require a raised leading tone like in the answer below.



d: i V i

ANSWER



(common-tone connection)

Fundamentals

This more advanced stuff starts to get very ragged if you lose your grip on the fundamentals. You still need to know your scales, key signatures, and triads to do it correctly. I recommend some review with an app (like tonesavvy.com, teoria.com or the Tenuto app on iPhone) and maybe the extra credit worksheets that I'll give out this week.