


Theory Quiz #3 will be Tuesday, Nov 19

A. Intervals

We never tested the “large” intervals (sixths and sevenths) so we should bring them back. We’ll make and recognize a few intervals of different sizes (including both “small” and “large.”)

(make)



↑ P4

(ID)



m7

B. Make Triads in Inversion

Make a few triads in first or second inversion, like on homework #12.




A \flat major
in 2nd inversion

ANSWER




C. Recognize Triads in Inversion

Recognize some triads that are either in root, 1st or 2nd inversion, like on homework #12.



in _____

ANSWER

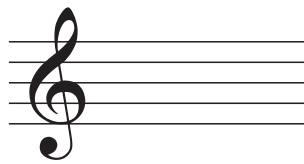


e diminished

in 1st inversion

D. Roman Numerals in Major

Make some triads in a few keys. Like homework #10 (mislabelled as #11).



D: IV

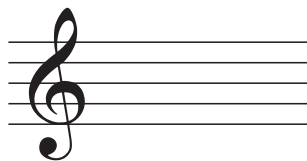
ANSWER



Parts E and F on back...

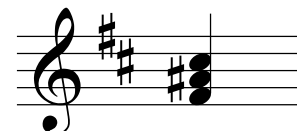
E. Roman Numerals in Minor

These require you to start with a key signature, and you may have to add an additional natural or sharp to make the raised leading-tone (for V or vii°).



b: V

ANSWER

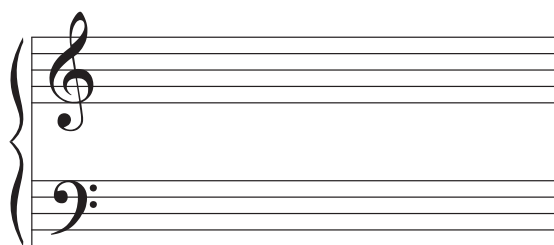


b: V

F. Progressions

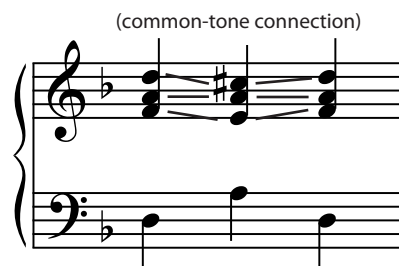
We will do a few of these. They will be I-V-I type progressions like on worksheets #13 and #14. You can use the common-tone procedure or the next-closest procedure to connect your chords.

The instructions will say to put in a key signature. You will have to raise your leading-tone on some of them.



d: i V i

ANSWER



(common-tone connection)

Fundamentals

This more advanced stuff starts to get very ragged if you lose your grip on the fundamentals. You need to be very confident with your scales, key signatures, and triads. I recommend some review with an app (like tonesavvy.com, teoria.com or the Tenuto app on iPhone) and maybe the extra credit worksheets that I'll give out this week.