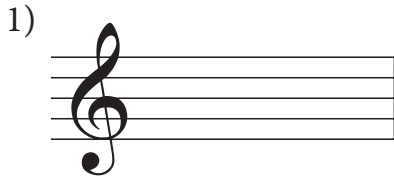


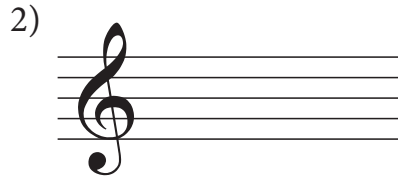
More Triads and Intervals

A. Diminished and Augmented Triads

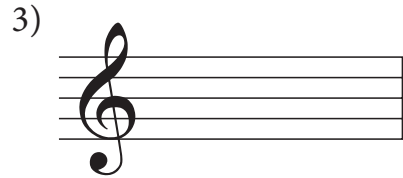
Let's make a few of the weirder triads, the ones that seem either "too big" or "too small." Read pp. 46-47 in the theory anthology for an explanation on how to make them.



E dim

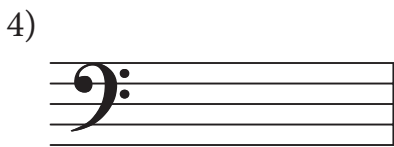


C aug

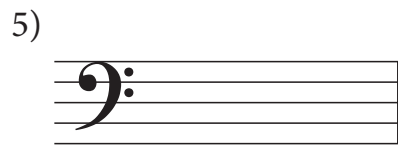


D aug

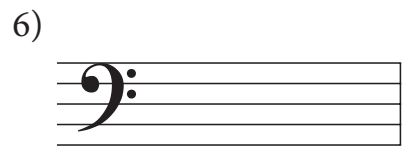
(bass clef)



A dim



A^b aug

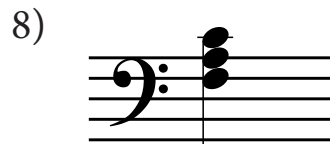


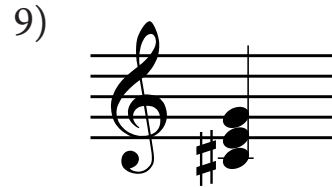
C[#] dim

B. ID Triad Types

The following triads are either major, minor, augmented or diminished. Indicate the type of chord in the blank. Watch your clefs.







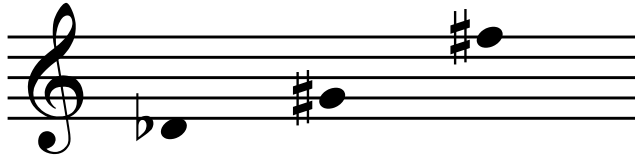






C. Make These Intervals

Make the requested interval above or below the given note as indicated. I'll use the common abbreviations M, m, P, o and + for major, minor, perfect, diminished and augmented.



↑ P4 ↑ m3 ↓ P5



↑ +2 ↑ +4 ↓ M2

D. ID These Intervals

Identify each interval in the blank below the example. You can use the same abbreviations I used above (m2, P4 etc) or any other system that makes sense to you. Watch your clefs!

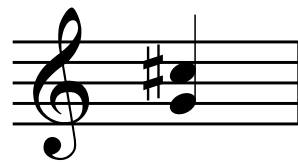
19)



20)



21)



22)



23)



24)