

I-V-I with the “next-closest” connection

A. Common-tone vs. Next-Closest (vs. Wrong)


Our Theory Anthology Ch 18 (pp. 69-71) explains what the “next-closest” connection is. Basically, when you are making a I-V-I progression you have three options - the common-tone technique, the next closest connection that moves a little bit more, or the wrong answer that moves too much and makes bad parallels.

Inspect these progressions and decide what kind of connection they are making.

1) 
A: I V I

This progression uses the _____ technique.

- a. common tone
- b. next closest
- c. wrong

2) 
B \flat : I V I

- a. common tone
- b. next closest
- c. wrong

3) 
a: i V i

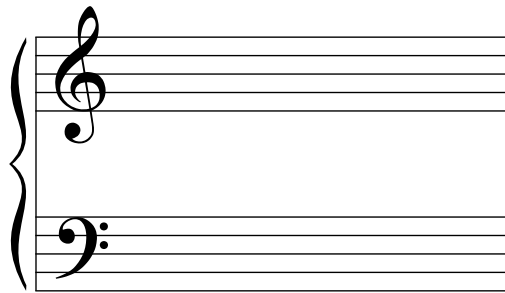
- a. common tone
- b. next closest
- c. wrong

4) 
E \flat : I V I

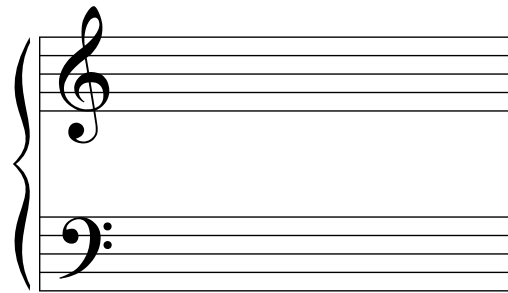
- a. common tone
- b. next closest
- c. wrong

B. Makin' Some I-V-I's

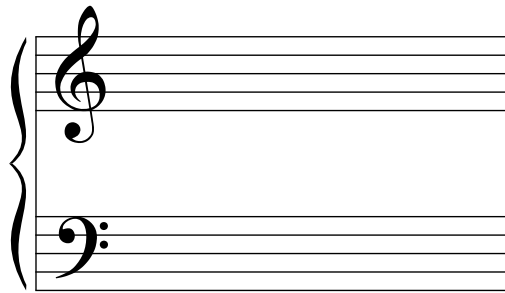
Please make these progressions with the "next-closest" connection. Start by putting a key signature in.



D: I V I



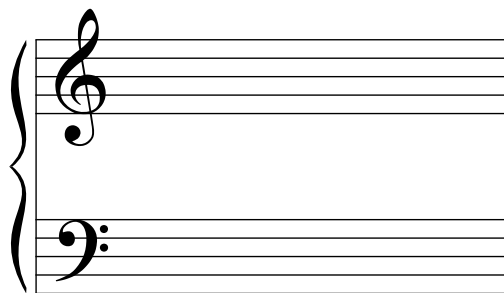
g: I V I



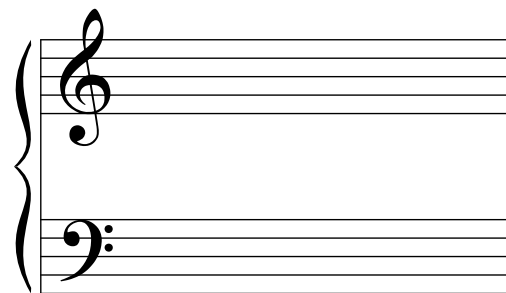
F: I V I

C. New progressions

The techniques we've been practicing can be used to make other progressions, too. They are useful any time the bass moves by fourth or fifth. Make these two progressions using either common-tone or next-closest connections.



G: I IV I



C: ii V I