

Advanced Theory Test #1 Study Guide

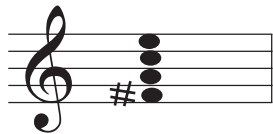
Our first test will be on **Friday, Feb 21**. The syllabus says we are only doing two of these but this is actually the first of three. I think this is a better plan, and I'll rejigger our grading proportions in some reasonable way at the end of the semester.

Here is a list of everything you need to know!

I. Seventh Chord Types

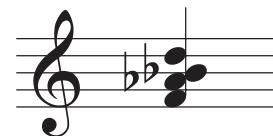
We can start out with an old topic from 220 - making or recognizing seventh chords. Know your five types (textbook p. 5). You may need to recognize some chords that are flipped around like on worksheet #2.

Making a 7th chord



F# half-
diminished
7th

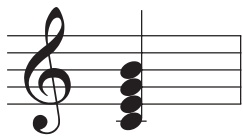
Recognizing a flipped-around seventh chord



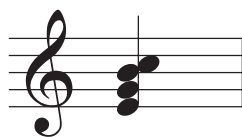
Bb dominant
7th

II. Inversion Symbols

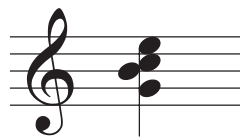
You'll need to be comfortable with all of our inversion symbols, both the old ones for triads (namely ⁶ and ⁴) and the new ones for seventh chords (p. 7). We will need these when we do one or two short analyses.



root pos
7



1st inv
6
5



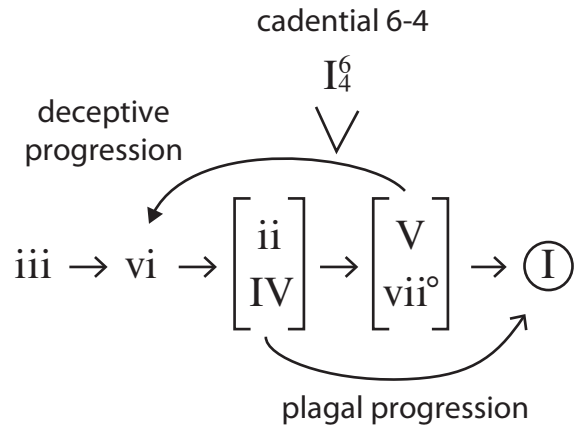
2nd inv
4
3



3rd inv
4
2

III. New Flowchart Details

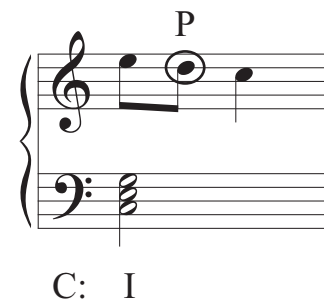
Plagal progression, deceptive progression, cadential $\frac{6}{4}$.
 We'll probably do an analysis that features one of these and I'll ask you about it. See Chapter 2.



IV. Non Chord Tones

These are explained in Chapter 3, and we practiced marking them in Worksheet #4. Passing, neighbor, appoggiatura, escape tone, anticipation, suspension, retardation, pedal tone.

Maybe I'll make short questions that focus on the different types, or maybe we'll just ID some NCTs as part of an analysis.



V. Making V^7-I and $vii^{o7}-i$

We'll make a few very short progressions in our usual four-part keyboard style. Chapters 5 and 6, Worksheets #5 and #6. We won't do the more sophisticated progs at the top of worksheet #6 (like $I IV V^7 I$), just the simple $I - V^7 - I$ and $i - vii^{o7} - i$.

